



Mid-Ohio Heart Clinic, Inc.

Cardiovascular Disease Specialists

680 Park Ave. West
P.O. Box 1408
Mansfield, OH 44901

419.524.8151
800.686.3966
419.524.1747 Fax

MID-OHIO HEART CLINIC, INC.

TILT TABLE TEST

Patient Instructions

You are scheduled to have a tilt table test on _____ at MedCentral Health System in Mansfield. Please use the main entrance and report to outpatient registration.

This procedure is used to diagnose a common cause of fainting or syncope (sin-ko-pe).

The patient is positioned lying flat on a tilt table with a weight-bearing footboard. An IV line, ECG monitor and blood pressure device is placed. After a baseline heart rate and blood pressure are determined, the table is slowly tilted upright and blood pressure, heart rate and EKG are monitored up to 30-45 minutes.

MEALS

Nothing to eat or drink 6 hours prior to the appointment time.

ATTIRE

Wear loose fitting clothes and comfortable shoes.

MEDICATIONS

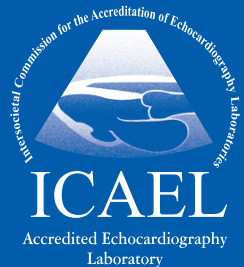
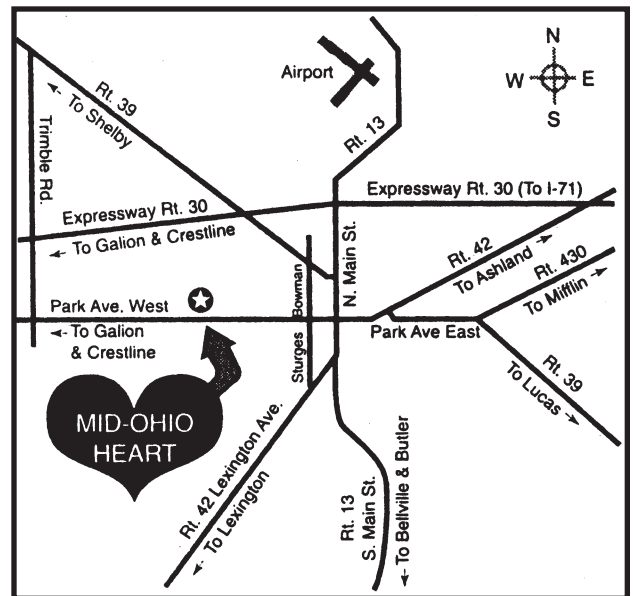
You may take all of your medicine prior to your test.

If you have any further questions feel free to call the office and ask for nursing.

You will not be able to drive home so please have a ride arranged.

IF YOU HAVE TO CANCEL, PLEASE CALL OUR OFFICE 24-HOURS PRIOR TO YOUR APPOINTMENT TIME.

Thank you.



Website:
www.midohioheart.com